

Mounting instructions Railspot

Your Railspot set – ready for use

Thank you for your order. This set contains everything you need for a fast and safe installation of the Railspot.

You will find step-by-step instructions below. Do you have any questions? We are here to help.

Contents of the set

- 1x Railspot
- 1x connection cable

Installation steps

1) Position Railspot

Place the Railspot against the handrail and secure it at the designated positions using two stainless steel cable ties.

2) Connect plugs

Firmly insert the plugs on both sides of the Railspot into the corresponding sockets. Important! Check to make sure the plugs are locked in place!

3) Installing cables

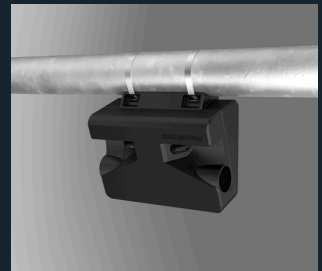
Lay the cables with slack, **do not pull them tight.**

4) Checking and testing

Check all connections. Is everything secure? Then apply power and check if the lights work.

Questions or need help?

We are happy to assist you



RAILLIGHTING – LIGHT ON THE RIGHT TRACK.